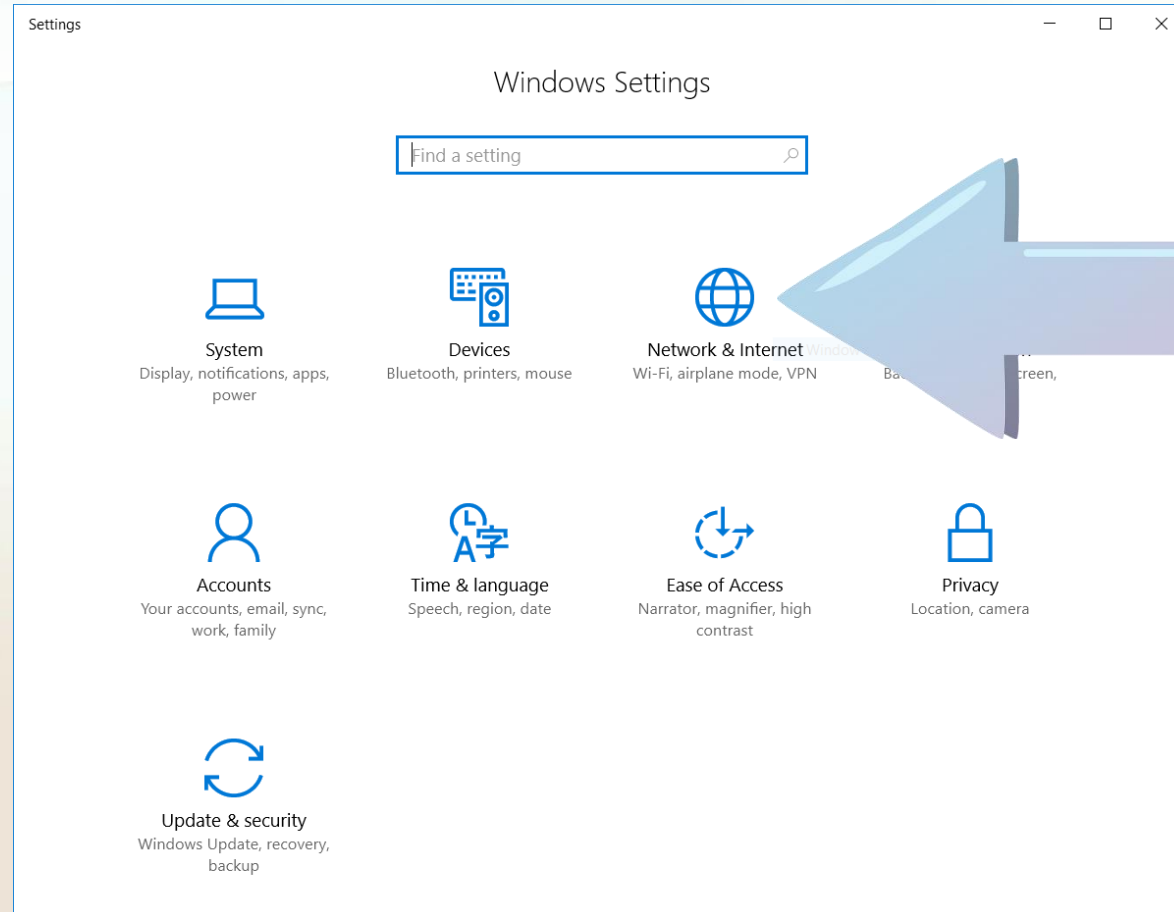
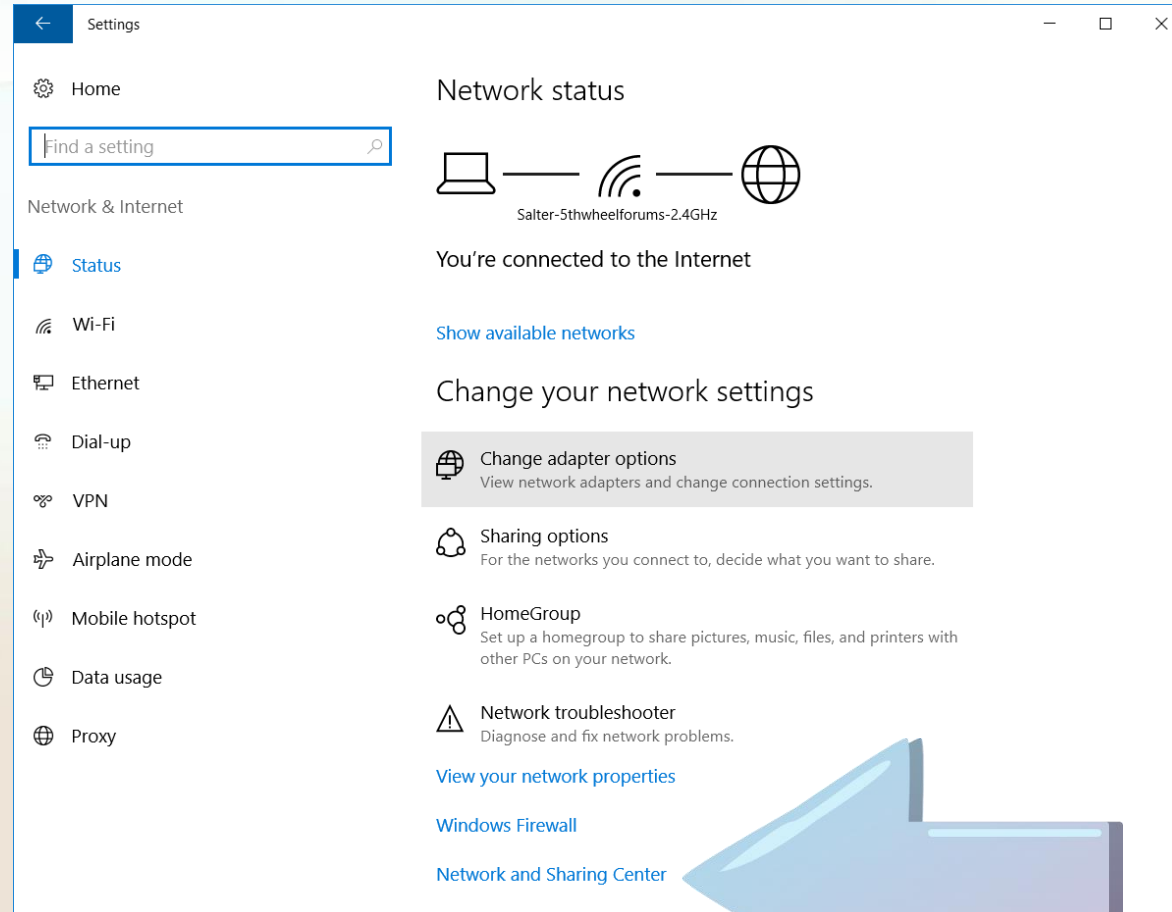


I Forgot my Wireless Router's Password

Network & Internet



Network and Sharing Center



The screenshot shows the Windows Settings application, specifically the 'Network & Internet' section. The left sidebar contains a search bar and a list of settings: Home, Status (selected), Wi-Fi, Ethernet, Dial-up, VPN, Airplane mode, Mobile hotspot, Data usage, and Proxy. The main content area is titled 'Network status' and shows the current network connection as 'Salter-5thwheelforums-2.4GHz'. Below this, it states 'You're connected to the Internet' and provides a link to 'Show available networks'. The 'Change your network settings' section includes links for 'Change adapter options', 'Sharing options', 'HomeGroup', 'Network troubleshooter', 'View your network properties', 'Windows Firewall', and 'Network and Sharing Center'. A large blue arrow points from the 'Network and Sharing Center' link towards the right side of the screen.

Settings

Home

Find a setting

Network & Internet

Status

Wi-Fi

Ethernet

Dial-up

VPN

Airplane mode

Mobile hotspot

Data usage

Proxy

Network status

Salter-5thwheelforums-2.4GHz

You're connected to the Internet

Show available networks

Change your network settings

Change adapter options
View network adapters and change connection settings.

Sharing options
For the networks you connect to, decide what you want to share.

HomeGroup
Set up a homegroup to share pictures, music, files, and printers with other PCs on your network.

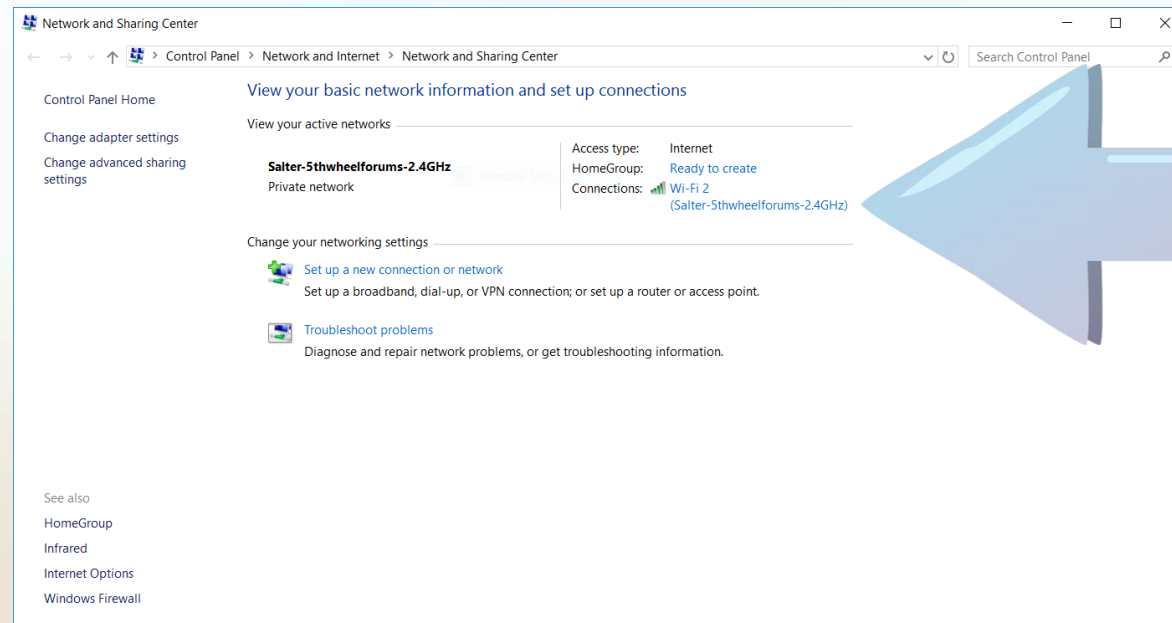
Network troubleshooter
Diagnose and fix network problems.

View your network properties

Windows Firewall

Network and Sharing Center

Right “Click”



The screenshot shows the Windows Network and Sharing Center window. The title bar reads "Network and Sharing Center". The breadcrumb navigation shows "Control Panel > Network and Internet > Network and Sharing Center". The main content area is titled "View your basic network information and set up connections". Under "View your active networks", there is a section for "Salter-5thwheelforums-2.4GHz" (Private network). To the right of this network name, the following details are listed: Access type: Internet; HomeGroup: Ready to create; Connections: Wi-Fi 2 (Salter-5thwheelforums-2.4GHz). A large blue arrow points from the right side of the window towards the network name. Below the active networks section, there are links for "Set up a new connection or network" and "Troubleshoot problems". On the left side of the window, there is a sidebar with links for "Control Panel Home", "Change adapter settings", and "Change advanced sharing settings". At the bottom left, there is a "See also" section with links for "HomeGroup", "Infrared", "Internet Options", and "Windows Firewall".

Network and Sharing Center

Control Panel > Network and Internet > Network and Sharing Center

View your basic network information and set up connections

View your active networks

Salter-5thwheelforums-2.4GHz
Private network

Access type: Internet
HomeGroup: Ready to create
Connections: Wi-Fi 2 (Salter-5thwheelforums-2.4GHz)

Change your networking settings

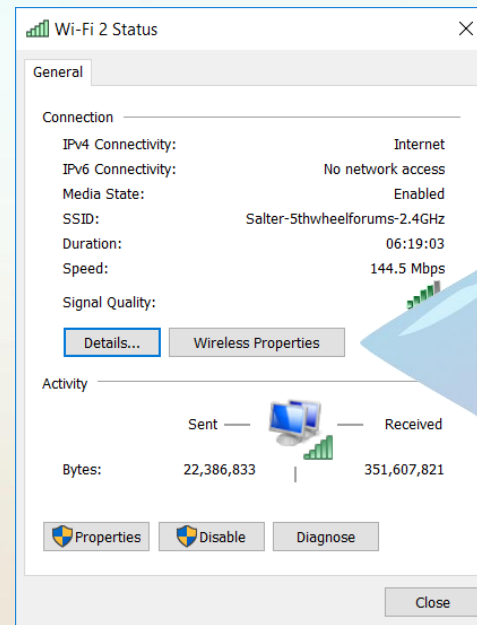
[Set up a new connection or network](#)
Set up a broadband, dial-up, or VPN connection; or set up a router or access point.

[Troubleshoot problems](#)
Diagnose and repair network problems, or get troubleshooting information.

See also

- HomeGroup
- Infrared
- Internet Options
- Windows Firewall

Left “Click”



Show Characters

